

News Update

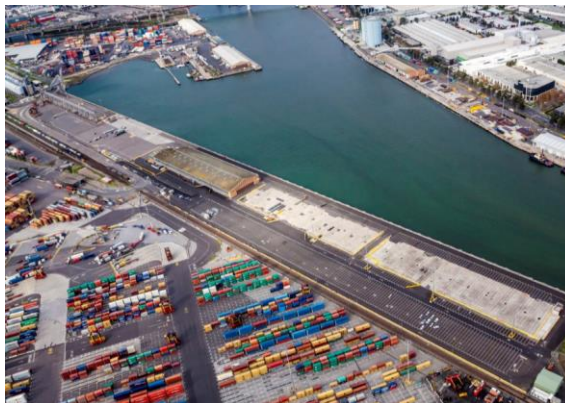
December, 2017

AAT extends lease at Appleton Dock

Since taking of the operating lease in April 2014, AAT has continually developed the Appleton Dock terminal supporting the diverse trade services through the terminal. In late 2017, AAT renewed its tenure at Appleton Dock for a further 5 years, commencing January 1, 2018. AAT Appleton Dock is now the prime general cargo terminal in the Port of Melbourne providing a range of services to shipping lines, stevedores and other terminal users. AAT will announce further site development in 2018.



Appleton Dock – Pre Development



Appleton Dock Shed removal AAT circa 2014



AAT build Dome Shelter provide 1800 mtrs of undercover storage at Appleton Dock

