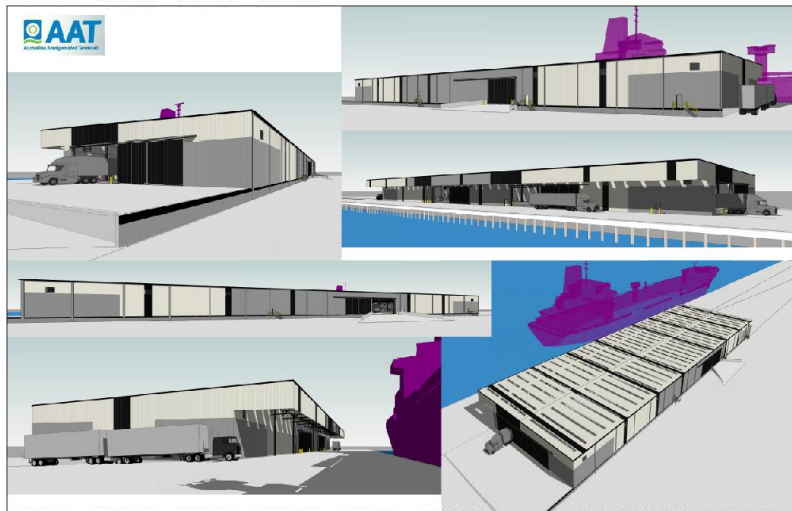


News Update

January, 2018

AAT announce construction of new 6100m² warehouse at Appleton Dock.

AAT continues its terminal re-development activities announcing the construction of a new 6,100M² warehouse at its Appleton Dock facility. Appleton Dock is the prime general cargo terminal in the Port of Melbourne, with the new structure to increase undercover storage on site to 9,350m². The structure, will be constructed adjacent to the existing berth and is expected to be completed in June 2018. The new facilities provide extensive capacity for storage of weather sensitive cargoes with AAT planning further development for other specialised cargoes in 2018.



New 6100m² warehouse to be constructed at AAT's Appleton Dock terminal – Concept drawings



Progress image of construction from February, 2018. Construction is expected to be complete in June 2018